

# A handy walk-through for your AllStar<sup>®</sup> PRO pen

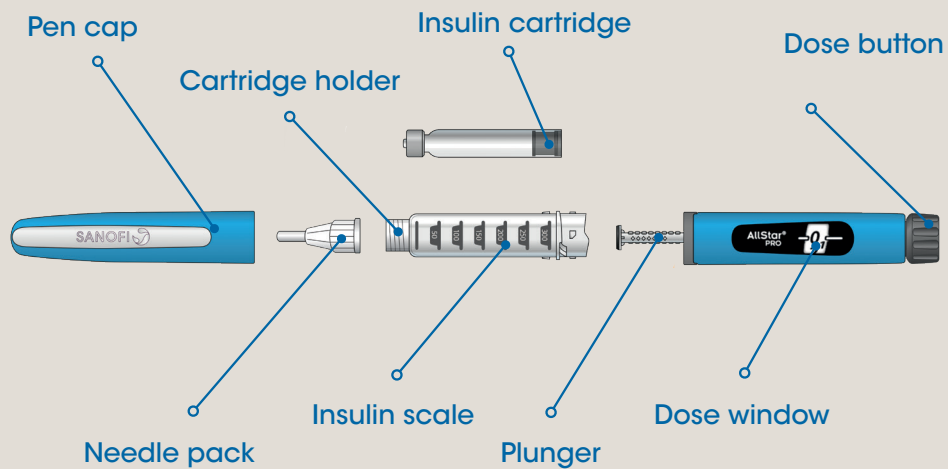


This booklet is intended only for people with diabetes who have been prescribed the AllStar<sup>®</sup> PRO injection pen

sanofi



# Getting to know your pen



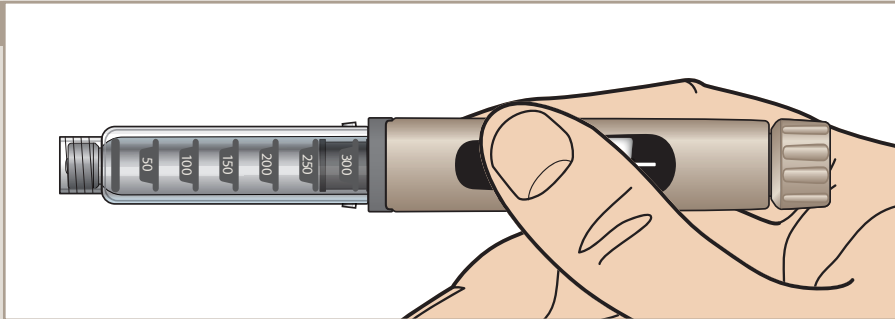
Your AllStar<sup>®</sup> PRO pen is meticulously designed and made from quality materials. It will help support you when managing your diabetes. Please take a moment to understand each part of the pen before reading the rest of this book.

**The AllStar<sup>®</sup> PRO reusable insulin pen can only be used with Sanofi 3 mL insulin cartridges (U-100) from Sanofi.** The contents of this booklet are informational in nature and should not be used to replace the instructions for use provided with the AllStar<sup>®</sup> PRO device. Read all of these instructions before using your pen. If you do not follow all of these instructions, you may get too much or too little insulin. All data shown in this booklet, such as the selection of doses, are examples used for demonstration purposes and are not to be used to suggest an actual dose of insulin. For any questions about your pen or about your diabetes, ask your doctor, nurse or pharmacist.



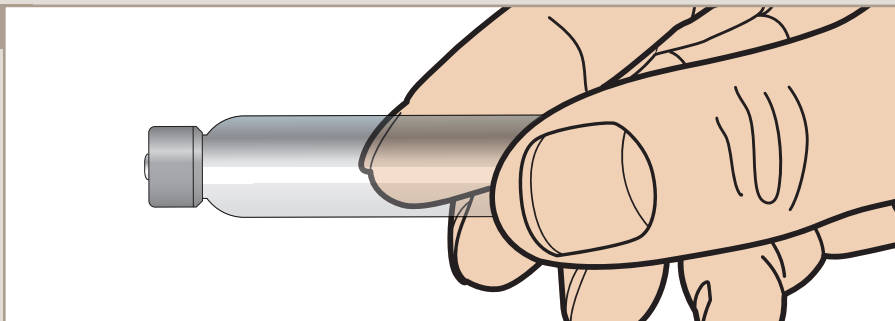
## Checking your insulin before every injection

1



Check the insulin type and expiry date.

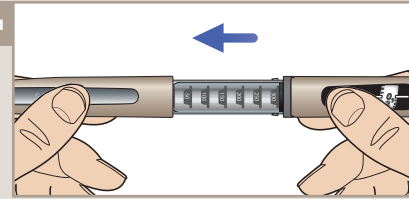
2



Your solution should be clear, colourless and water-like. Do not use it if there are particles in the insulin.

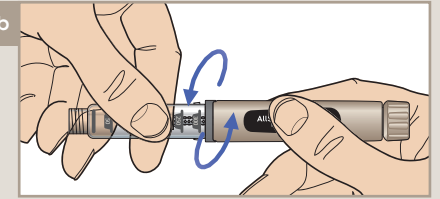
## Inserting a new insulin cartridge or replacing a used one

1a



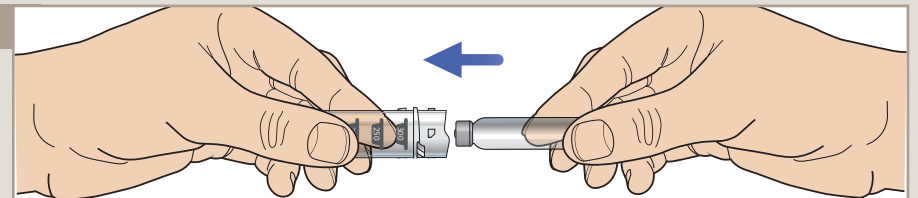
Pull off the pen cap.

1b



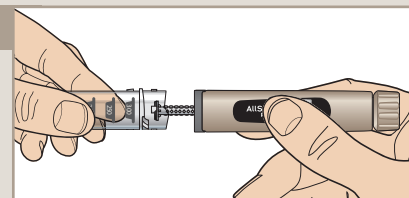
Unscrew the cartridge holder from the pen body.

2



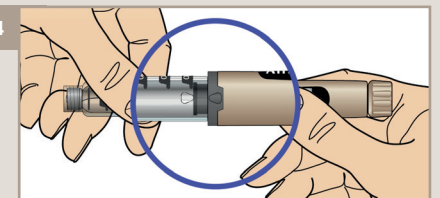
Insert the new cartridge, narrow end first, into the cartridge holder.

3



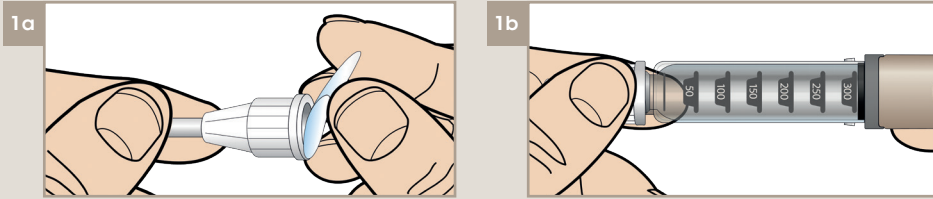
Align the insulin cartridge holder straight with the pen body and, if the plunger is extended, push it back with the insulin cartridge. Screw the cartridge holder firmly back onto the pen until you hear and feel it click.

4

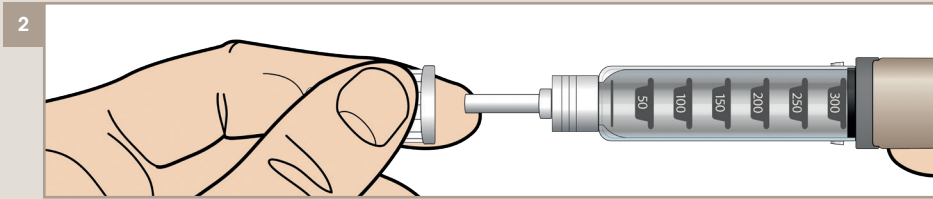


Check that the alignment marks on the cartridge holder and pen line up.

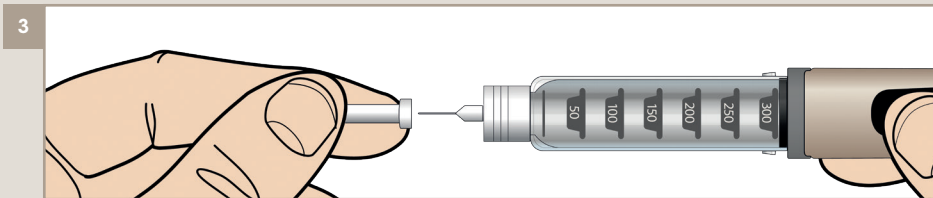
## Attaching a needle



Always use a new sterile needle for each injection to help prevent side effects e.g. infections. Peel off the protective seal and screw or (depending on the needle type) push the needle onto the pen, keeping it straight. You don't need to over-tighten the needle.

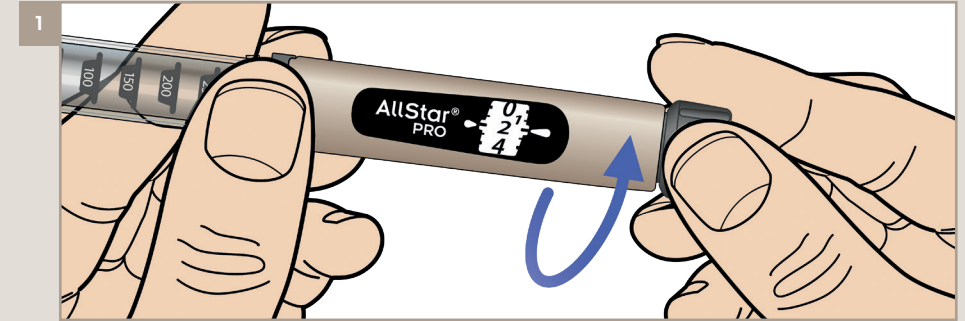


Remove the outer needle cap. Keep for later.

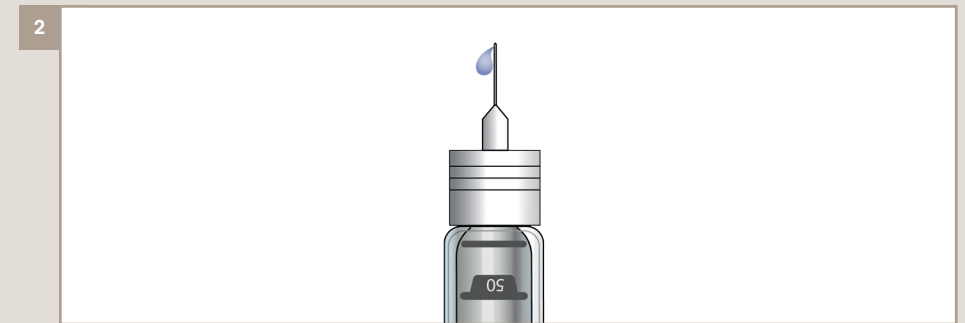


Remove the inner needle cap and throw it away.

## Safety test



Select 2 units by turning the dose selector to '2'.



Press the dose button all the way in. When insulin comes out of the needle tip your pen is working correctly. If no insulin comes out, refer to the full instructions for use. You may see air bubbles in the insulin. This is normal – they will not harm you.

The first safety test after the insertion of a new insulin cartridge is very important, but you should also do a safety test before each injection.

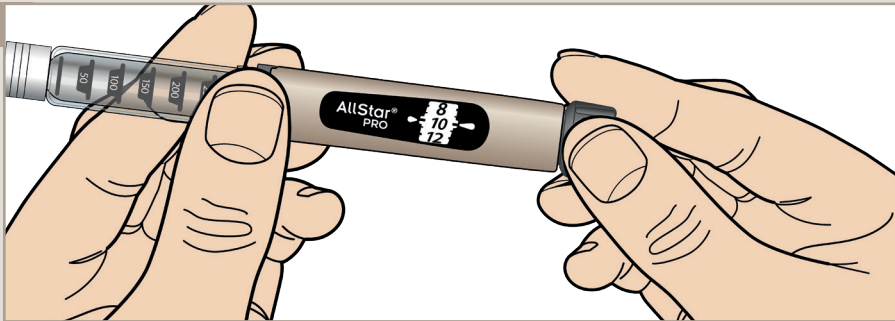
## Selecting & injecting your dose

1a



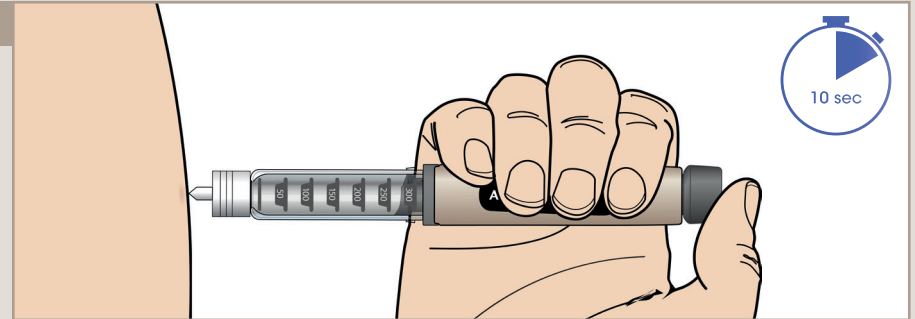
Your starting dose is \_\_\_\_\_

1b



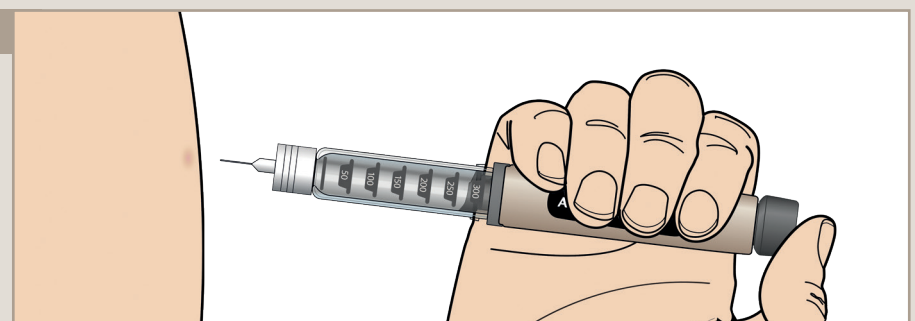
Make sure the needle is attached and the dose is set to 0. Choose a place to inject. Remember that injection sites within an injection area (abdomen, thigh or upper arm) must be rotated from one injection to the next. Select your dose and push the needle into the skin.

2



Place your thumb on the dose button then slowly press the injection button all the way in. When you see '0' in the dose window, slowly count to 10.

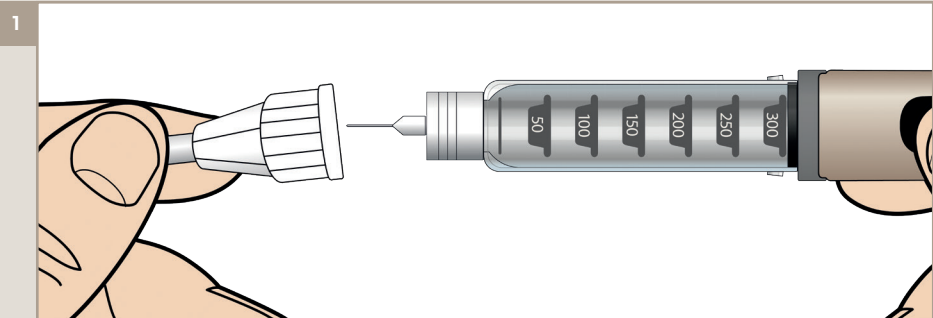
3



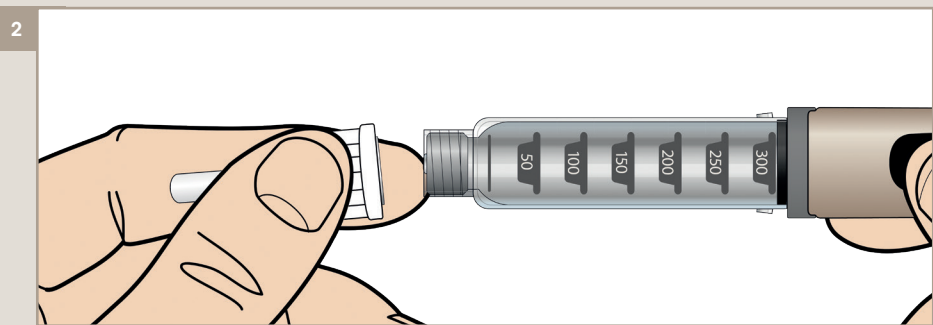
Release the button and remove the needle from your skin.

**Do not select a dose AND press the dose button without a needle attached. This may damage your pen. If there are not enough units left in your pen for your dose, please refer to the instructions for use to understand how to administer your full dose.**

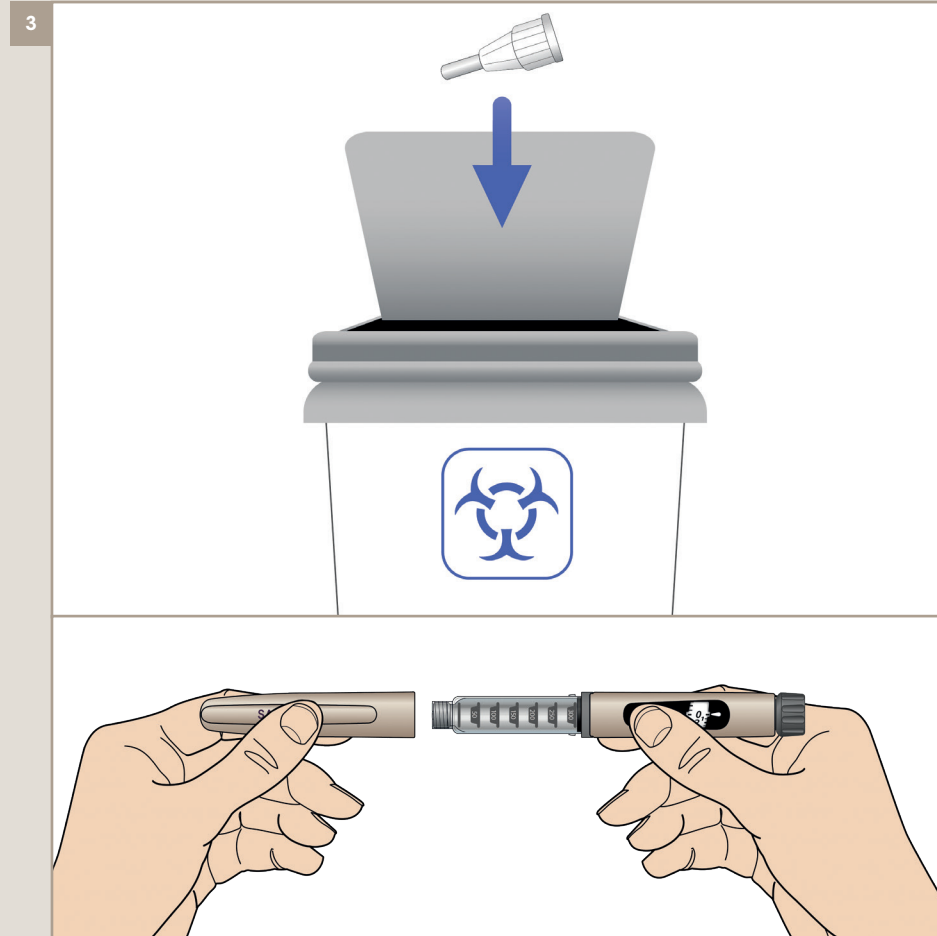
## Removing the needle from the pen



Push the outer needle cap back onto the needle, keeping it straight.



Squeeze the outer needle cap and twist the needle from the pen.



Throw the needle away in a puncture-resistant container and replace the pen cap.

## Useful tips

Your AllStar® PRO pen has been designed to be used for up to 3 years after first use.

Each insulin cartridge contains 300 units of insulin so you can keep using it until it runs out, or for up to 28 days. When the insulin cartridge is empty, follow the steps explained earlier to replace it with a new one. Here are some tips to ensure that it is kept in top condition.

Record the date your pen was first used here: \_\_\_\_\_

## Storage

- Always store your AllStar® PRO pen with the insulin cartridge inserted, without the needle and with the cap on
- Keep your pen at room temperature
- Do not store AllStar® PRO in the refrigerator; do not freeze
- Lantus® cartridges **that are in use** may be stored for a maximum of 4 weeks, not above 30°C and away from direct heat or light
- Apidra® and Trurapi® cartridges **that are in use** may be stored for a maximum of 4 weeks, not above 25°C and away from direct heat or light

## Care

- Clean the outside of the pen with a damp cloth
- Keep your pen safe and avoid dropping it on hard surfaces
- Contact your healthcare professional if you think the pen may be broken

If ever you are unsure about your AllStar® PRO pen, you should contact your healthcare professional:



Your healthcare professional

---



---



---



---



---



---



### **Reporting of side effects:**

If you get any side effects, talk to your doctor, pharmacist or nurse. This includes any possible side effects not listed in the package leaflet. You can also report side effects directly via the Yellow Card Scheme at [www.mhra.gov.uk/yellowcard](http://www.mhra.gov.uk/yellowcard) or search for MHRA Yellow Card in the Google Play or Apple app Store.

Alternatively, you can report side effects to Sanofi on Tel: 0800 0902 314 or send via email to [UKdrugsafety@sanofi.com](mailto:UKdrugsafety@sanofi.com). By reporting side effects, you can help provide more information on the safety of this medicine.

Sanofi, 410 Thames Valley Park Drive, Reading, Berkshire, RG6 1PT

Sanofi Medical Information  
**0800 0902 314**

**sanofi**